

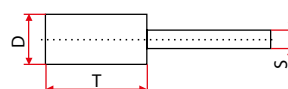
# Mounted polishing stones

Mounted polishing stones  
 Muela sobre vástago  
 Trzpienie polerskie  
 Mós montada  
 Meules sur tige



S	D	T	REF.
3	2	5	N°001 ZY 0205/3
	3	6	N°002 ZY 0306/3
	4	2	N°003 ZY 0402/3
		8	N°004 ZY 0408/3
	5	10	N°005 ZY 0510/3
	6	13	N°006 ZY 0613/3
	8	2	N°007 ZY 0802/3
		10	N°008 ZY 0810/3
		16	N°009 ZY 0816/3
	10	2	N°010 ZY 1002/3
		13	N°011 ZY 1013/3
	13	3	N°012 ZY 1303/3
		13	N°013 ZY 1313/3
	16	4	N°014 ZY 1604/3
	20	6	N°015 ZY 2006/3
6	5	10	N°027 ZY 0510/6
	6	13	N°028 ZY 0613/6
	10	20	N°029 ZY 1020/6
		25	N°030 ZY 1025/6
		32	N°031 ZY 1032/6
	13	3	N°032 ZY 1303/6
		6	N°033 ZY 1306/6
		13	N°034 ZY 1313/6
		25	N°035 ZY 1325/6
		40	N°036 ZY 1340/6
	16	4	N°037 ZY 1604/6
		10	N°038 ZY 1610/6
		20	N°039 ZY 1620/6
		32	N°040 ZY 1632/6
		40	N°041 ZY 1640/6
		50	N°042 ZY 1650/6
	20	6	N°043 ZY 2006/6

ZY

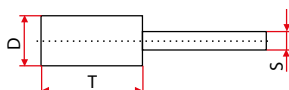


# Mounted polishing stones

Mounted polishing stones  
 Muela sobre vástago  
 Trzpienie polerskie  
 Mós montada  
 Meules sur tige



ZY



S	D	T	REF.
6	20	8	Nº044 ZY 2008/6
		10	Nº045 ZY 2010/6
		13	Nº046 ZY 2013/6
		20	Nº047 ZY 2020/6
		25	Nº048 ZY 2025/6
		32	Nº049 ZY 2032/6
		40	Nº050 ZY 2040-6
		50	Nº051 ZY 2050/6
	25	6	Nº052 ZY 2506/6
		13	Nº053 ZY 2513/6
		16	Nº054 ZY 2516/6
		25	Nº055 ZY 2525/6
		32	Nº056 ZY 2532/6
		40	Nº057 ZY 2540/6
	32	8	Nº058 ZY 3208/6
		16	Nº059 ZY 3216/6
		20	Nº060 ZY 3220/6
		32	Nº061 ZY 3232/6
		40	Nº062 ZY 3240/6
	40	6	Nº063 ZY 4006/6
10		Nº064 ZT 4010/6	
15		Nº065 ZY 4015/6	
20		Nº066 ZY 4020/6	
40		Nº067 ZY 4040/6	
50	8	Nº068 ZY 5008/6	
	13	Nº069 ZY 5013/6	
	25	Nº070 ZY 5025/6	

KU



S	D	REF.
3	3	Nº016 KU 03/3
	5	Nº017 KU 05/3
	8	Nº018 KU 08/3
	10	Nº019 KU 10/3
	13	Nº020 KU 13/3

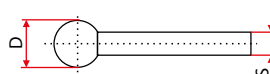
# Mounted polishing stones

Mounted polishing stones  
 Muela sobre vástago  
 Trzpień polerskie  
 Mós montada  
 Meules sur tige



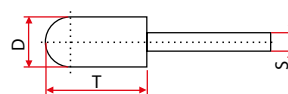
S	D	REF.
6	3	N°071 KU 03/6
	5	N°072 KU 05/6
	8	N°073 KU 08/6
	10	N°074 KU 10/6
	13	N°075 KU 13/6
	16	N°076 KU 16/6
	20	N°077 KU 20/6
	25	N°078 KU 25/6
	32	N°079 KU 32/6

**KU**



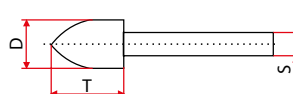
S	D	T	REF.
3	3	6	N°021 WR 0306/3
	5	10	N°022 WR 0510/3
6	3	6	N°080 WR 0306/6
	5	10	N°081 WR 0510/6
	8	16	N°082 WR 0816/6
	13	20	N°083 WR 1320/6
	20	25	N°084 WR 2025/6

**WR**



S	D	T	REF.
3	3	6	N°023 SP 0306/3
	5	10	N°024 SP 0510/3
	9	16	N°025 SP 0816/3
6			N°090 SP 0816/6
	13	20	N°091 SP 1320/6
	20	32	N°092 SP 2032/6
		50	N°093 SP 2050/6
	25	40	N°094 SP 2540/6

**SP**

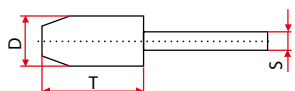


# Mounted polishing stones

Mounted polishing stones  
 Muela sobre vástago  
 Trzpienie polerskie  
 Mós montada  
 Meules sur tige

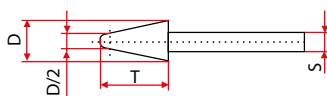


**WK**



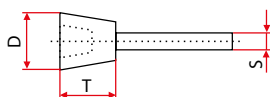
S	D	T	REF.
6	13	20	Nº085 WK 1320/6 AR O 5 V
		32	Nº086 WK 1332/6 AR O 5 V
	20	25	Nº087 WK 2025/6 AR O 5 V
	25	32	Nº088 WK 2532/6 AR O 5 V
	32	40	Nº089 WK 3240/6 AR O 5 V

**KE**



S	D	T	REF.
3	10	10	Nº026 KE 1010/3 AR O 5 V
6	10	25	Nº095 KE 1025/6 AR O 5 V
		13	Nº096 KE 1313/6 AR O 5 V
	16	16	Nº097 KE 1616/6 AR O 5 V
	16	45	Nº098 KE 1645/6 AR O 5 V
	20	20	Nº099 KE 2020/6 AR O 5 V
32		Nº100 KE 2032/6 AR O 5 V	
40		Nº101 KE 2040/6 AR O 5 V	
25	25	Nº102 KE 2525/6 AR O 5 V	
	45	Nº103 KE 2545/6 AR O 5 V	
32	32	Nº104 KE 3232/6 AR O 5 V	

**TO**



S	D	T	REF.
6	20	16	Nº105 TO 2016/6 AR O 5 V
	25	20	Nº106 TO 2520/6 AR O 5 V
	32	25	Nº107 TO 3225/6 AR O 5 V
	40	32	Nº108 TO 4032/6 AR O 5 V